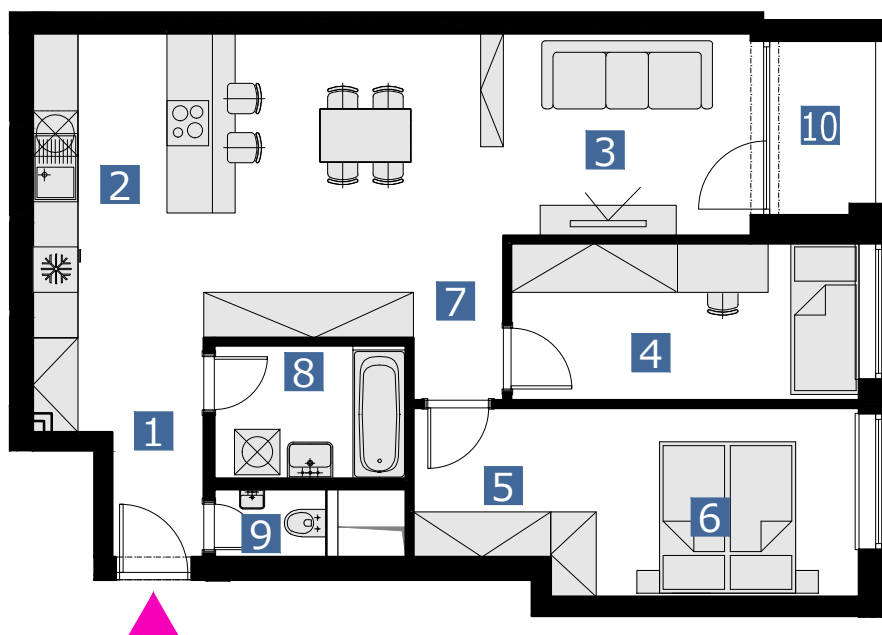


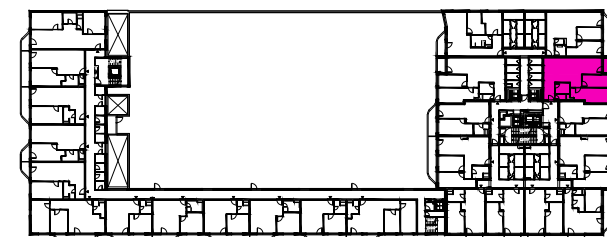
## BYT 5HMT / FLAT 5HMT

### 3 izbový byt / 3 rooms flat



|                     |              |                         |
|---------------------|--------------|-------------------------|
| 1. vstupná predsieň | /lobby       | 0 5, 2 3 m <sup>2</sup> |
| 2. kuchyňa          | /kitchen     | 1 8, 9 0 m <sup>2</sup> |
| 3. obývacia izba    | /living room | 0 9, 9 1 m <sup>2</sup> |
| 4. izba             | /bedroom     | 0 9, 5 4 m <sup>2</sup> |
| 5. šatník           | /wardrobe    | 0 3, 5 8 m <sup>2</sup> |
| 6. izba             | /bedroom     | 1 0, 1 9 m <sup>2</sup> |
| 7. chodba           | /corridor    | 0 6, 5 1 m <sup>2</sup> |
| 8. kúpeľňa          | /bathroom    | 0 4, 4 6 m <sup>2</sup> |
| 9. wc               | /wc          | 0 2, 2 8 m <sup>2</sup> |
| 10. loggia          | /loggia      | 0 3, 1 8 m <sup>2</sup> |

**CELKOVÁ PLOCHA /TOTAL 70,60 m<sup>2</sup>**



s ch é m a p ô d o r y s u 5 . N P  
/ s c h e m e o f t h e f i f t h f l o o r



0 1 2 3 4 5 6 M 1:100

pôdorys je spracovaný na marketingové účely | zariadenie predmety a ich rozmiestnenie má len ilustračný charakter  
floor plan is processed for marketing purposes | furniture and its placement is only for illustration